


Modern Steel Construction

July 2023





Every year, NASCC: The Steel Conference's exhibit hall includes the latest innovative solutions for creating and building successful structural steel projects.

2023 Hot Products

This year's NASCC: The Steel Conference, which took place in April in Charlotte, was the biggest yet, bringing together nearly 6,000 industry professionals. It also featured more than 300 exhibitors who brought an array of useful products, services, equipment, and machinery designed to make one or multiple steps in the steel supply chain easier, more efficient, and faster. Following are some of the innovative offerings from the show.

.....

All product, software, and service information was submitted by the manufacturers/developers/providers. This list does not constitute an endorsement by *Modern Steel Construction* or AISC.

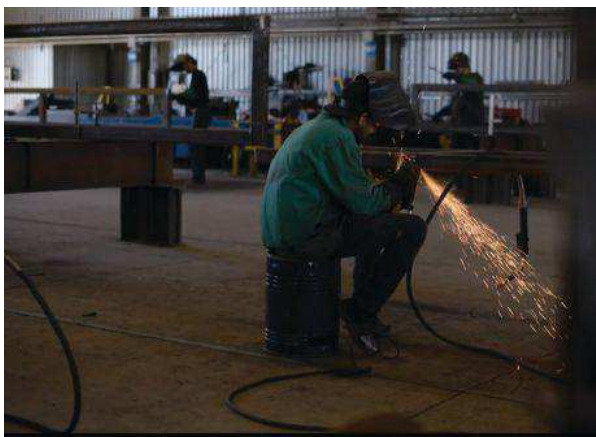
Hot Barcoding

Working towards the goal of increasing the speed at which a steel project can be fabricated and erected, P2 Programs' newest product, STSX, provides fabricators, painters, galvanizers, and erectors with extreme mobility in barcoding using phones, tablets, and other devices. STSX is a web-based application that brings real-time tracking information to your fingertips to significantly reduce decision-making time. Barcoding with STSX increases the speed of your existing processes and negates the inefficiencies that have been accepted as standard operating procedures (SOP) for far too long. The benefit is clear: STSX will improve production by reducing decision-making time and errors while also providing a reduction of needed manpower and manhours. All the above leads to a decrease in hours and an increase in productivity. Using STSX barcoded steel provides for a virtually error-free data collection environment while saving money and employee time with a return on investment of approximately one year. For more information, visit www.p2programs.com.



Hot Training

Worker Efficiency has created a library of 140-plus online video training courses focusing on structural steel processes from fabrication to erection process, how to read drawings, OSHA qualifications, forklift operation, and more. The videos are designed to speed up and simplify training the next generation of steel construction workers by means of an internet connection without skimping on the details of what future employees need to know. The courses are the result of two years of case studies, research, and development to make sure that the information that is taught is streamlined and accurate to modern standards. For more information, visit www.workerefficiency.com.



Prequalification limits
Prequalified connection is in accordance with AISC Seismic Provisions for Structural Steel Buildings

Prequalified connection

System: Intermediate moment frames (IMF)
Connection type: Reduced beam section (RBS)

Item	Value	Requirement	Reference	Status
M1 - depth	393.70	≥ 1095.38 mm	[1] (S.3-21)	OK
M1 - flange slenderness	5.45	≤ 9.19	[1] (S.3-20)	OK
M1 - web slenderness	14.18	≤ 36.06	[1] (S.3-20)	OK
M2 - depth	414.02	≥ 1095.38 mm	[1] (S.3-12)	OK
M2 - weight	75	≥ 449 kg/m ³	[1] (S.3-13)	OK
M2 - flange thickness	16.00	≥ 48.45 mm	[1] (S.3-14)	OK

Prequalified Connections
for Special and Intermediate
Steel Moment Frames for
Seismic Applications
including Supplement No. 1

Steel Institute of America
American Institute of Steel Construction, Inc.

Smarter.
Stronger.
Steel.

Hot Connection Design

IDEA StatiCa 23 includes several enhancements designed to help you streamline your workflows, win back valuable time and money, and eliminate risk. Significant updates for U.S. customers include the addition of the AISC *Specification for Structural Steel Buildings* (ANSI/AISC 360-22) and Canada's CSA S16:19: *Design of Steel Structures* as well as the addition of qualification checks for seismic prequalified moment connections, including reduced beam sections, bolted unstiffened/stiffened extended end plates, bolted flange plates, welded unreinforced flange—welded webs (WUF-W), and double-tee moment connections. For more information, visit www.ideastatica.com.



Hot Bolting System

Atlas Tube's Shuriken Structural Nut Keeper now allows for field-bolted HSS column splices and other connections with faster assembly and lower costs than welding. Shuriken technology makes HSS the obvious choice for structural steel projects and now includes the new 1-in. size, in addition to existing ¾-in. and 7/8-in. sizes. Shuriken holds a nut in hard-to-reach places, allowing you to bolt what you would otherwise have to weld. Simply tack weld Shuriken to metal plates in the shop, bolt to an apparatus, then field splice. Because there are no labor-intensive and time-consuming field welds, and connections are more likely to pass inspection quickly, Shuriken can significantly speed up a project's timeline. For more information, visit atlastube.com/shuriken.